

# GARTEC MID 1000 STEP LIFT

*By MPR*



## ABOUT

The GarteC MID 1000 is a wheelchair step lift ideal for any internal or external environment, with no pit required. This step lift is based on our popular GarteC Strategos Elegance model however we are able to offer a quicker lead and installation time due to it's standardised specification. If you would like to customise, this can be done on our GarteC Strategos Elegance lift.

The standardised specification set includes; manual double manual doors, powder coated in RAL 7004, 600-1000mm travel, 1 phase, safety glass, soft start, key switch. The walls and doors are manufactured from transparent polycarbonate, enhancing it's suitability for external environments. Robust and durable, it has a capacity of 400kg / 4-5persons and can travel up to a height of 1 metre.

Simple and straightforward to install via a flexible fixing attachment arrangement to the wall to assist with some minor building discrepancies. A freestanding steel framework is also an alternative option (lifting height between 600-1000mm). No additional space is required to house machinery as the motor is contained within the unit.

## SUITABLE APPLICATIONS

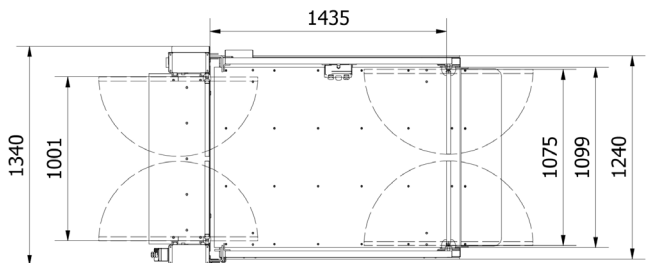
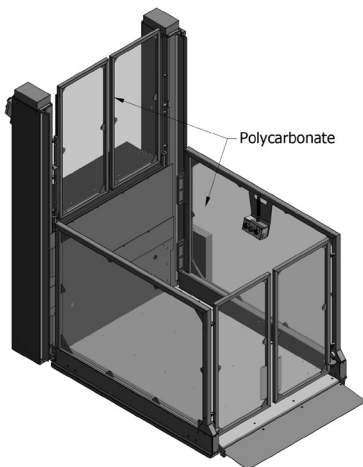
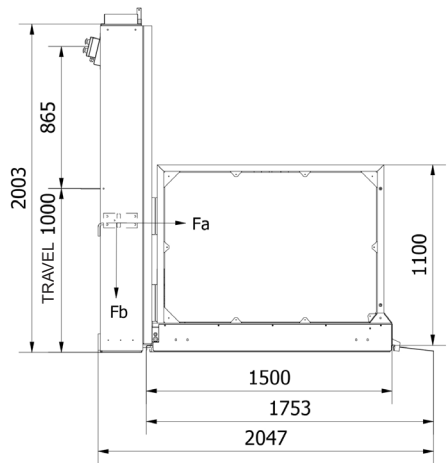
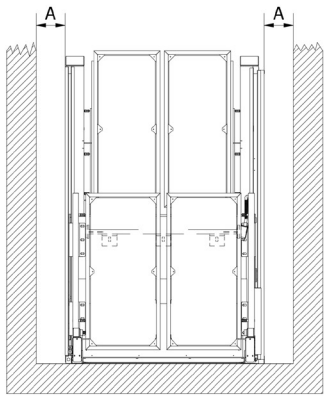
Ideal for quick turnaround projects for public spaces such as, local authority, retail, small office buildings, education, health, care homes and leisure.

## TECHNICAL DETAILS

Type of Lift	Step platform lift for public, commercial and residential environments
Platform Dimensions	1100 x 1460mm
Environment	Internal and external
Travel*	600mm - 1000mm
Rated Speed	0.08m/s
Capacity	400kg
Drive	Electrical motor / Screw and nut
Motor	3.0 kW Motor
Electrical Supply	Single phase 50 hz, three phase 50 hz optional,
Fuse	16 Amp, lockable isolator
Control Voltage	24 Volts
Compliance	BS6440, Machinery directive, Approved document M, Equality Act



DRAWINGS



All of our MPR step lifts are supplied with 12 months product warranty and 12 months maintenance and servicing as standard.

