

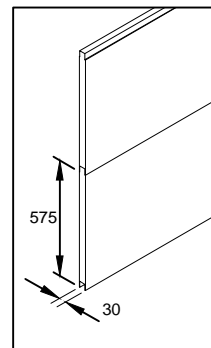
VIEW A

VIEW B

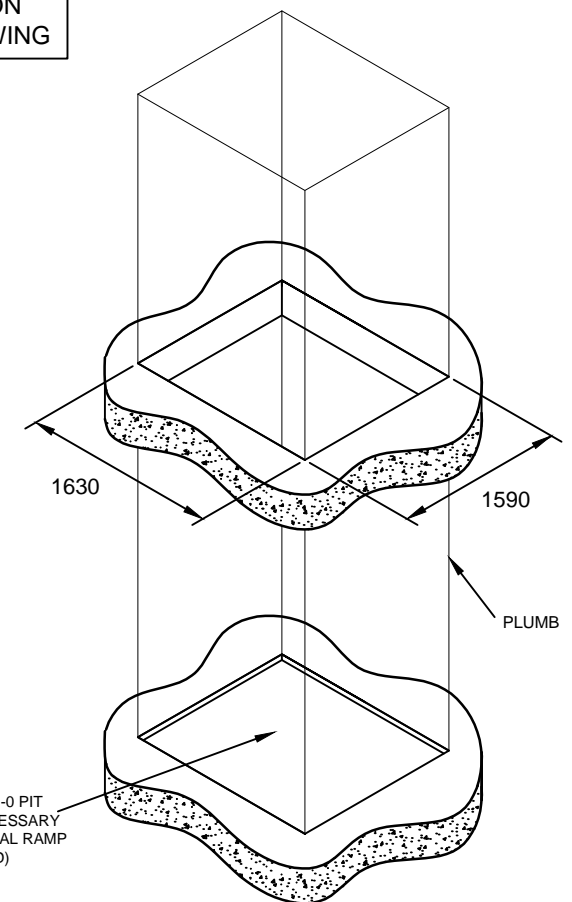
VIEW C

NOT TO BE USED FOR CONSTRUCTION - INDICATION PURPOSES ONLY - REFER TO SITE SPECIFIC DRAWING

POWDER COATED STEEL / EPS / STEEL SANDWICH PANELING



(POWDER COATED IF ALTERNATIVE OPTIONAL RAL COLOUR SPECIFIED)

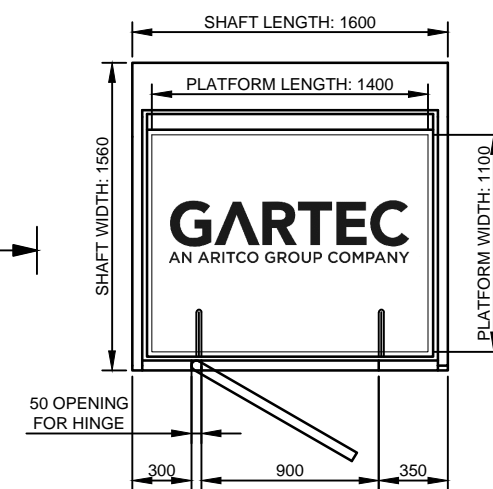


APERTURE & PIT REQUIREMENTS

View D

View C

View A



View B

PRINCIPAL DATA:

TYPE:
ARITCO 9000 PLATFORM LIFT

DRIVE SYSTEM:
STATIC SCREW WITH ROTATING NUT

CAPACITY:
400KG

TRAVEL:
2300MM TO 13000MM

NO OF STOPS:
2 SHOWN
(UP TO A MAXIMUM OF 6 AVAILABLE)

SUPPLY VOLTAGE:
400V 3PH 50HZ

RUNNING CURRENT:
4.7AMP

STARTING CURRENT:
18AMP

LIFT STANDARD COLOUR:
RAL 9016 WHITE
(OTHER RAL COLOURS AVAILABLE)

DOOR DATA:

TYPE:
GL TYPE SHOWN (ALTERNATIVES AVAILABLE)

NO OF DOORS:
2 SHOWN (UP TO A MAXIMUM OF 6 AVAILABLE)

FIRE RATING:
AVAILABLE (NOT SHOWN)

OPENING SIZE:
900 X 2000MM

DOOR FRAME:
INTEGRAL TO SHAFT ENCLOSURE

DOOR/FRAME COLOUR:
WHITE POWDER COATED RAL 9016
(OTHER RAL COLOURS AVAILABLE)

DOOR GLASS:
VARIABLE

CLOSER:
MANUAL TYPE SHOWN
(AUTOMATIC VERSION AVAILABLE)

FURNITURE:
FITTINGS IN ANODISED ALUMINIUM

CABIN DATA

DOORS:
AUTOMATIC FOLDING DOORS
WITH SMALLVISION PANEL
(WITH BIG GLASS WINDOWS AVAILABLE)

HANDRAIL:
STAINLESS STEEL SIDE D
(OTHER SIDES AVAILABLE)
(OAK OPTION AVAILABLE)

STANDARD COLOUR:
VIEW D - BLACK (OTHER COLOURS AVAILABLE)
VIEW B & D - WHITE GREY (OTHER COLOURS AVAILABLE)

GARTEC 9000: 1100 PLATFORM, 2 STOP, LIFT ENTRY/EXIT SAME LONG SIDE

GARTEC

AN ARITCO GROUP COMPANY

Tel: +44 (0) 1296 397 100 Fax: +44 (0) 1296 397 600
email: sales@gartec.com www.gartec.com

Midshires Business Park
Smeaton Close
Aylesbury
Bucks
HP19 8HL

Drawn by
R.C.

Scale
NTS

Date
17/08/20

Drawing No.
SALES-9106

Issue
2