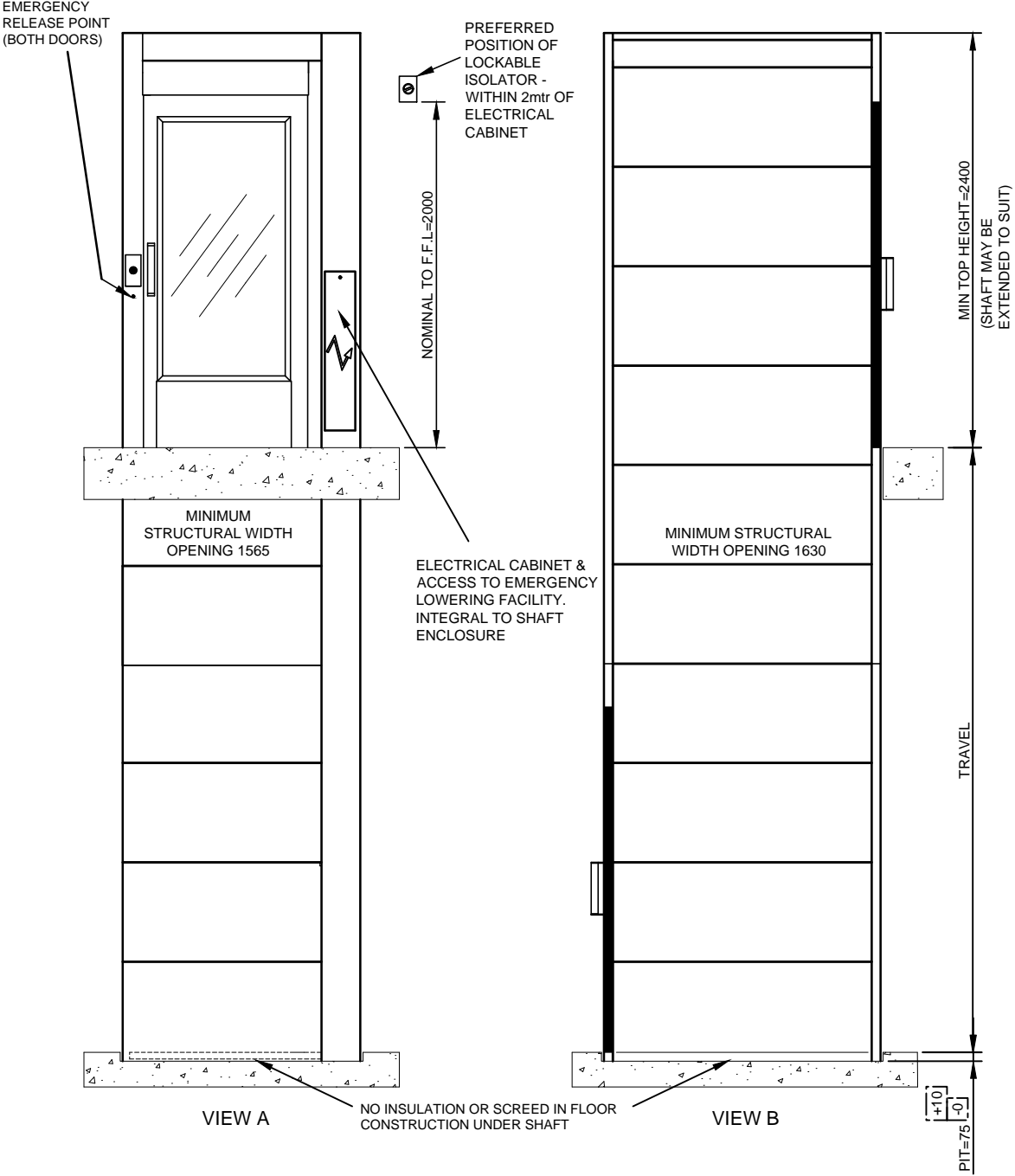
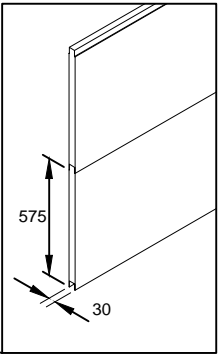


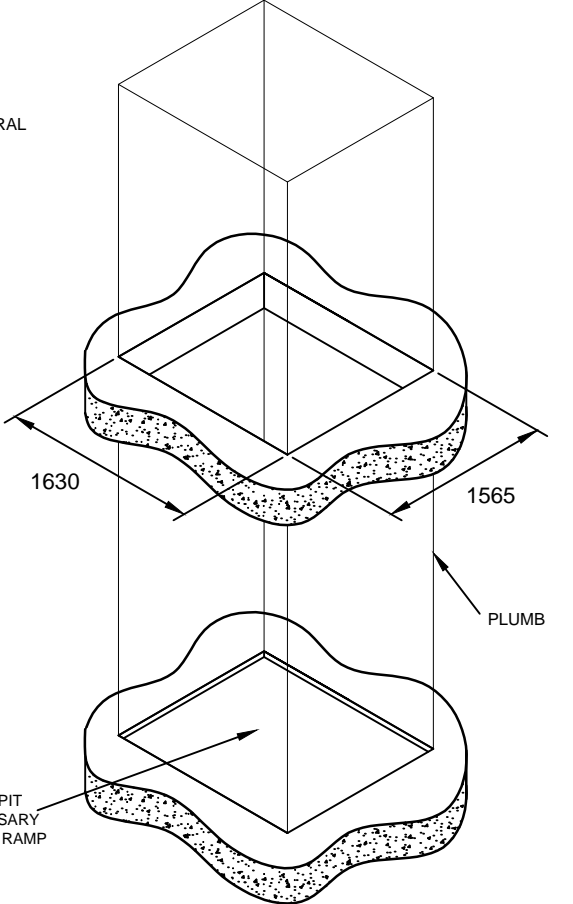
NOT TO BE USED FOR CONSTRUCTION - INDICATION PURPOSES ONLY - REFER TO SITE SPECIFIC DRAWING



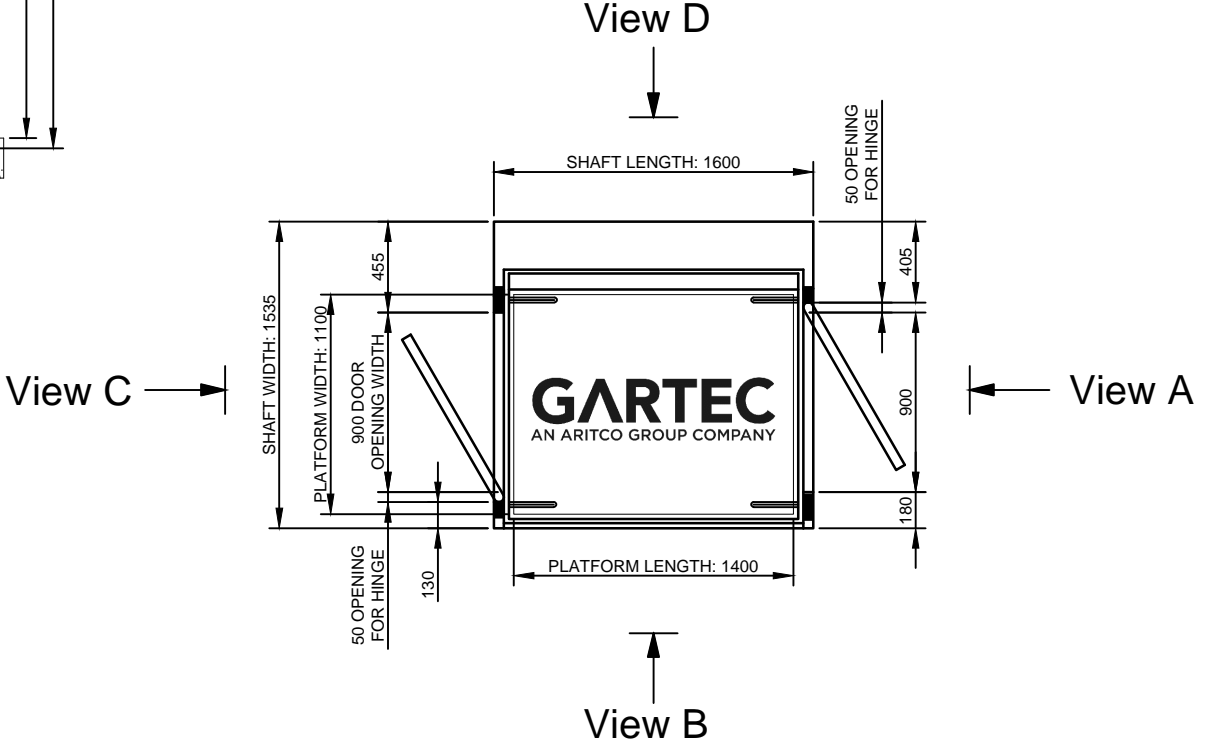
POWDER COATED STEEL / EPS / STEEL SANDWICH PANELING



(POWDER COATED IF ALTERNATIVE OPTIONAL RAL COLOUR SPECIFIED)



APERTURE & PIT REQUIREMENTS



PRINCIPAL DATA:

TYPE:
ARITCO 9000 PLATFORM LIFT

DRIVE SYSTEM:
STATIC SCREW WITH ROTATING NUT

CAPACITY:
400KG

TRAVEL:
2150MM TO 13000MM

NO OF STOPS:
2 SHOWN
(UP TO A MAXIMUM OF 6 AVAILABLE)

SUPPLY VOLTAGE:
400V 3PH 50HZ

RUNNING CURRENT:
4.7AMP

STARTING CURRENT:
18AMP

LIFT STANDARD COLOUR:
RAL 9016 WHITE
(OTHER RAL COLOURS AVAILABLE)

DOOR DATA:

TYPE:
GL TYPE SHOWN (ALTERNATIVES AVAILABLE)

NO OF DOORS:
2 SHOWN (UP TO A MAXIMUM OF 6 AVAILABLE)

FIRE RATING:
AVAILABLE (NOT SHOWN)

OPENING SIZE:
900 X 2000MM

DOOR FRAME:
INTEGRAL TO SHAFT ENCLOSURE

DOOR/FRAME COLOUR:
WHITE POWDER COATED RAL 9016
(OTHER RAL COLOURS AVAILABLE)

DOOR GLASS:
VARIABLE

CLOSER:
MANUAL TYPE SHOWN
(AUTOMATIC VERSION AVAILABLE)

FURNITURE:
FITTINGS IN ANODISED ALUMINIUM

CABIN DATA

DOORS:
AUTOMATIC FOLDING DOORS
WITH SMALL VISION PANEL
(WITH BIG GLASS WINDOWS AVAILABLE)

HANDRAIL:
STAINLESS STEEL SIDE D
(OTHER SIDES AVAILABLE)
(OAK OPTION AVAILABLE)

STANDARD COLOUR:
VIEW D - BLACK (OTHER COLOURS AVAILABLE)
VIEW B & D - WHITE GREY (OTHER COLOURS AVAILABLE)

GARTEC 9000: 1100 PLATFORM, 2 STOP, THROUGH				
GARTEC AN ARITCO GROUP COMPANY Tel: +44 (0) 1296 397 100 Fax: +44 (0) 1296 397 600 email: sales@gartec.com www.gartec.com	Midshires Business Park Smeaton Close Aylesbury Bucks HP19 8HL	Drawn by R.C.	Scale NTS	Date 17/08/20
		Drawing No. SALES-9101	Issue 2	