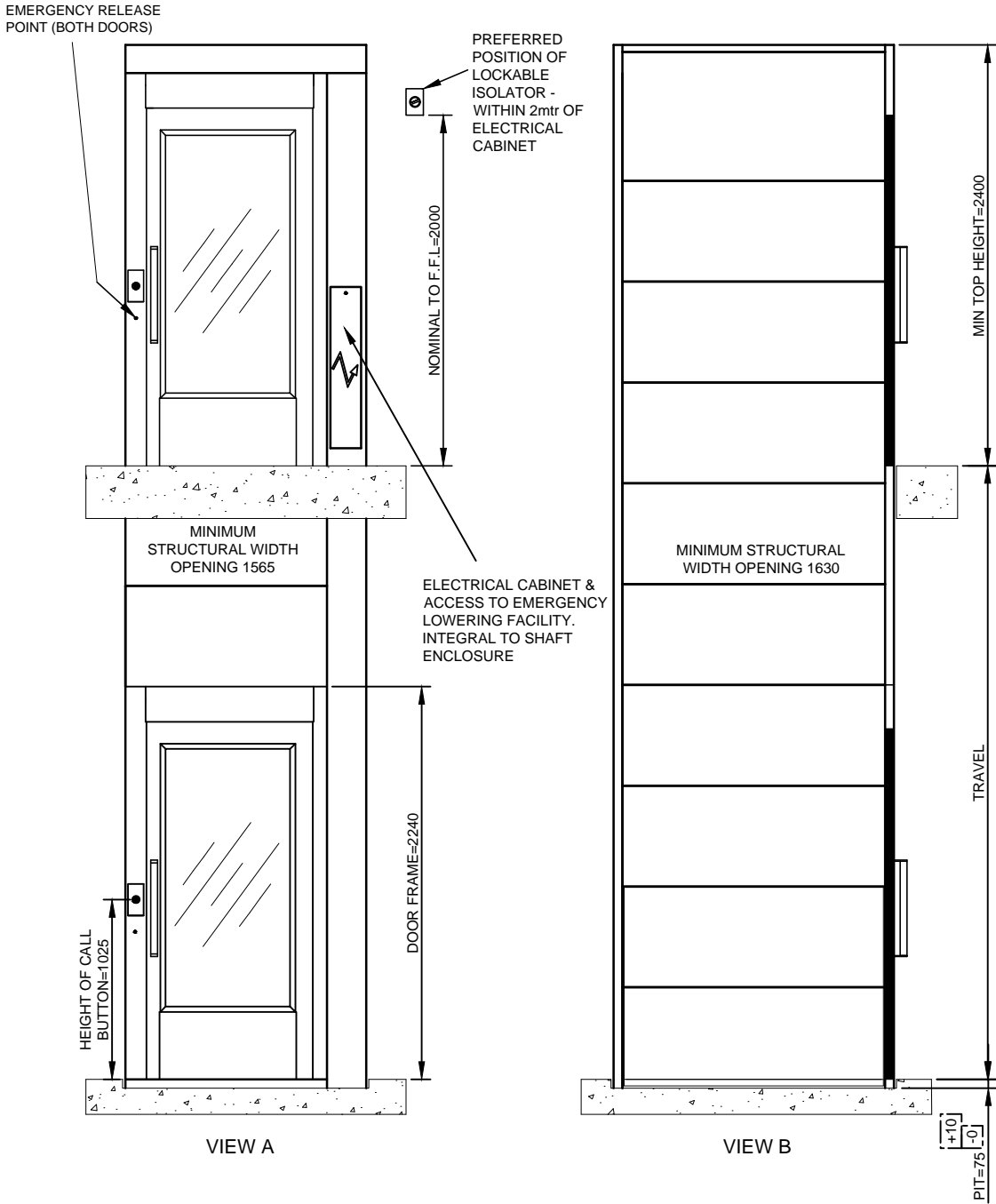


NOT TO BE USED FOR CONSTRUCTION - INDICATION
PURPOSES ONLY - REFER TO SITE SPECIFIC DRAWING



PRINCIPAL DATA:

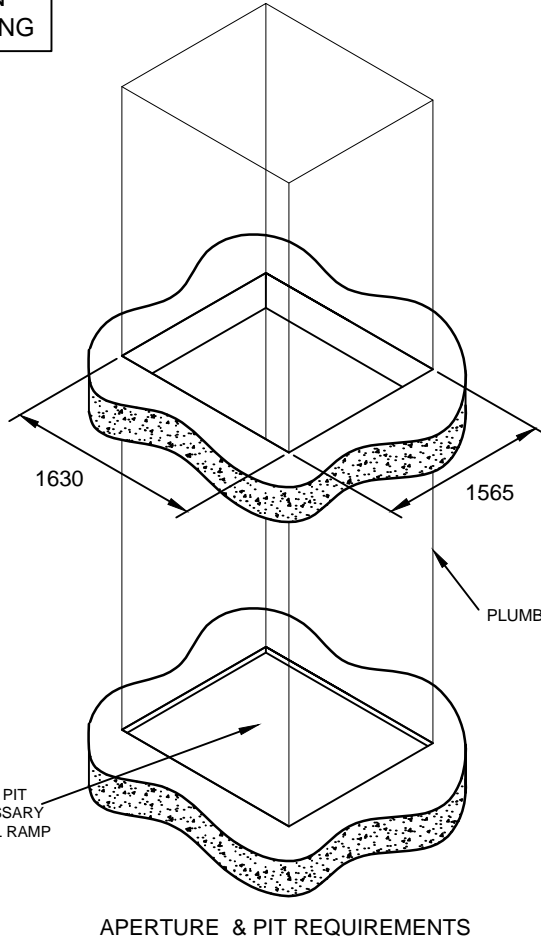
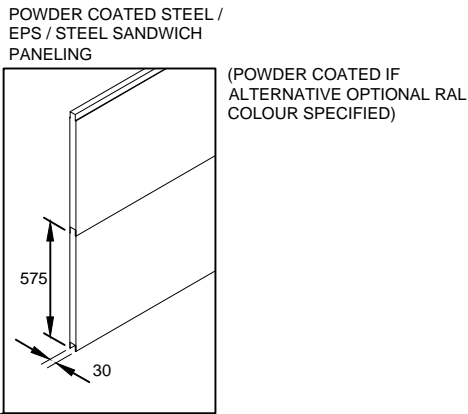
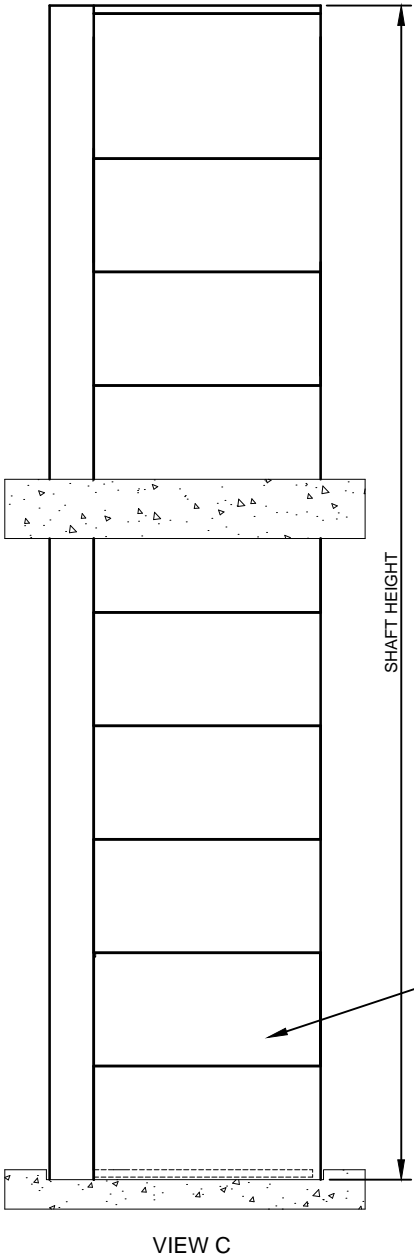
TYPE:
ARITCO 9000 PLATFORM LIFT
DRIVE SYSTEM:
STATIC SCREW WITH ROTATING NUT
CAPACITY:
400KG
TRAVEL:
2300MM TO 13000MM
NO OF STOPS:
2 SHOWN
(UP TO A MAXIMUM OF 6 AVAILABLE)
SUPPLY VOLTAGE:
400V 3PH 50HZ
RUNNING CURRENT:
4.7AMP
STARTING CURRENT:
18AMP
LIFT STANDARD COLOUR:
RAL 9016 WHITE
(OTHER RAL COLOURS AVAILABLE)

DOOR DATA:

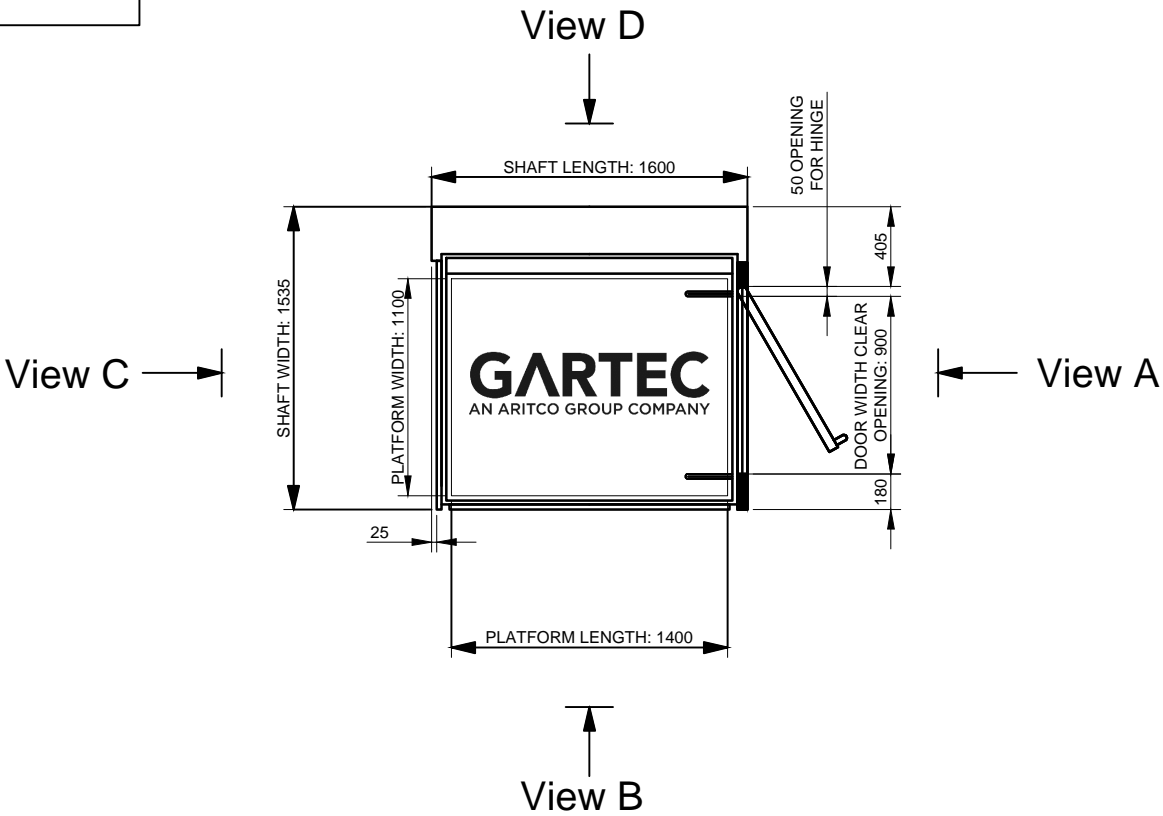
TYPE:
GL TYPE SHOWN (ALTERNATIVES AVAILABLE)
NO OF DOORS:
2 SHOWN (UP TO A MAXIMUM OF 6 AVAILABLE)
FIRE RATING:
AVAILABLE (NOT SHOWN)
OPENING SIZE:
900 X 2000MM
DOOR FRAME:
INTEGRAL TO SHAFT ENCLOSURE
DOOR/FRAME COLOUR:
WHITE POWDER COATED RAL 9016
(OTHER RAL COLOURS AVAILABLE)
DOOR GLASS:
VARIABLE
CLOSER:
MANUAL TYPE SHOWN
(AUTOMATIC VERSION AVAILABLE)
FURNITURE:
FITTINGS IN ANODISED ALUMINIUM

CABIN DATA

DOORS:
AUTOMATIC FOLDING DOORS
WITH SMALLVISION PANEL
(WITH BIG GLASS WINDOWS AVAILABLE)
HANDRAIL:
STAINLESS STEEL SIDE D
(OTHER SIDES AVAILABLE)
(OAK OPTION AVAILABLE)
STANDARD COLOUR:
VIEW D - BLACK (OTHER COLOURS AVAILABLE)
VIEW B & D - WHITE GREY (OTHER COLOURS AVAILABLE)



APERTURE & PIT REQUIREMENTS



GARTEC 9000:1100 PLATFORM, 2 STOP, LIFT ENTRY/EXIT SAME SHORT SIDE

GARTEC
AN ARITCO GROUP COMPANY
Tel: +44 (0) 1296 397 100 Fax: +44 (0) 1296 397 600
email: sales@gartec.com www.gartec.com

Midshires Business Park
Smeaton Close
Aylesbury
Bucks
HP19 8HL

Drawn by
R.C.
Drawing No.
SALES-9100

Scale
NTS
Date
17/08/20
Issue
2