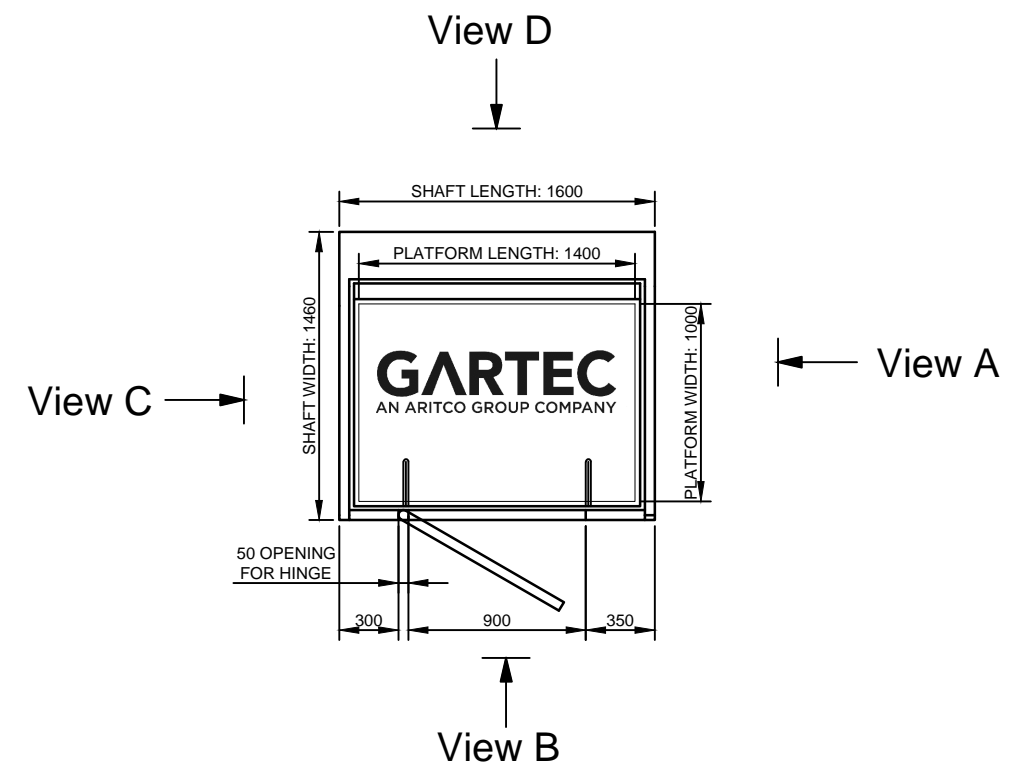
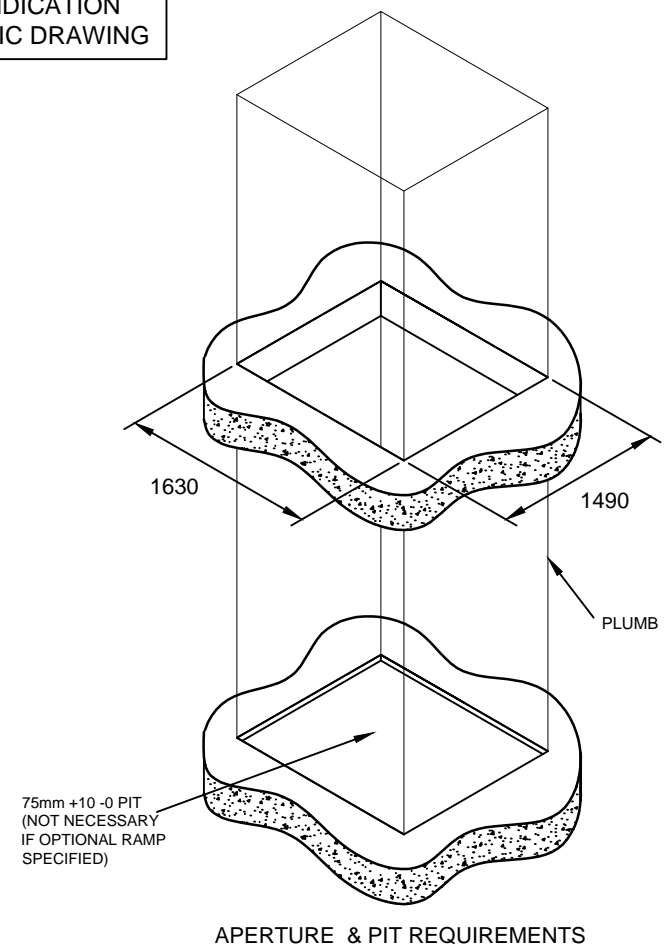


NOT TO BE USED FOR CONSTRUCTION - INDICATION PURPOSES ONLY - REFER TO SITE SPECIFIC DRAWING



PRINCIPAL DATA:

TYPE:
ARITCO 9000 PLATFORM LIFT
DRIVE SYSTEM:
STATIC SCREW WITH ROTATING NUT
CAPACITY:
400KG
TRAVEL:
2300MM TO 13000MM
NO OF STOPS:
2 SHOWN
(UP TO A MAXIMUM OF 6 AVAILABLE)
SUPPLY VOLTAGE:
400V 3PH 50HZ
RUNNING CURRENT:
4.7AMP
STARTING CURRENT:
18AMP
LIFT STANDARD COLOUR:
RAL 9016 WHITE
(OTHER RAL COLOURS AVAILABLE)

DOOR DATA:

TYPE:
GL TYPE SHOWN (ALTERNATIVES AVAILABLE)
NO OF DOORS:
2 SHOWN (UP TO A MAXIMUM OF 6 AVAILABLE)
FIRE RATING:
AVAILABLE (NOT SHOWN)
OPENING SIZE:
900 X 2000MM
DOOR FRAME:
INTEGRAL TO SHAFT ENCLOSURE
DOOR/FRAME COLOUR:
WHITE POWDER COATED RAL 9016
(OTHER RAL COLOURS AVAILABLE)
DOOR GLASS:
VARIABLE
CLOSER:
MANUAL TYPE SHOWN
(AUTOMATIC VERSION AVAILABLE)
FURNITURE:
FITTINGS IN ANODISED ALUMINIUM

CABIN DATA

DOORS:
AUTOMATIC FOLDING DOORS
WITH SMALLVISION PANEL
(WITH BIG GLASS WINDOWS AVAILABLE)
HANDRAIL:
STAINLESS STEEL SIDE D
(OTHER SIDES AVAILABLE)
(OAK OPTION AVAILABLE)
STANDARD COLOUR:
VIEW D - BLACK (OTHER COLOURS AVAILABLE)
VIEW B & D - WHITE GREY (OTHER COLOURS AVAILABLE)

GARTEC 9000: 1000 PLATFORM, 2 STOP, LIFT ENTRY/EXIT SAME LONG SIDE				
GARTEC AN ARITCO GROUP COMPANY Tel: +44 (0) 1296 397 100 Fax: +44 (0) 1296 397 600 email: sales@gartec.com www.gartec.com	Midshires Business Park Smeaton Close Aylesbury Bucks HP19 8HL	Drawn by S.H.	Scale NTS	Date 17/07/20
		Drawing No. SALES-9006	Issue 2	