

EMERGENCY RELEASE
POINT (BOTH DOORS)

PREFERRED
POSITION OF
LOCKABLE
ISOLATOR -
WITHIN 2mtrs OF
ELECTRICAL
CABINET

NOMINAL TO F.F.L.=2000

ELECTRICAL CABINET &
ACCESS TO EMERGENCY
LOWERING FACILITY.
INTEGRAL TO SHAFT
ENCLOSURE

MINIMUM
STRUCTURAL WIDTH
OPENING 1405

MIN TOP HEIGHT=2240
(SHAFT MAY BE
EXTENDED TO SUIT)

TRAVEL

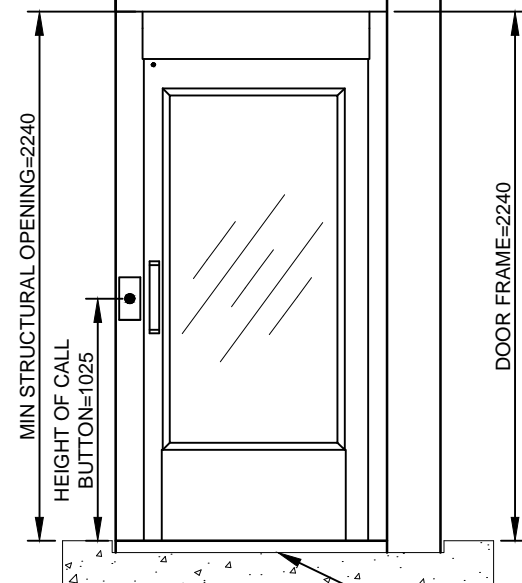
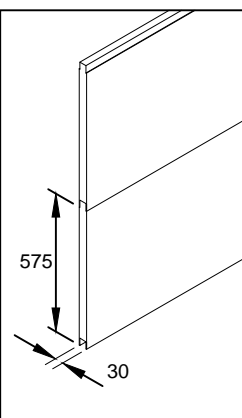
SHAFT HEIGHT

PLATFORM
CONTROL PANEL

HEIGHT OF PUSH
BUTTONS=900

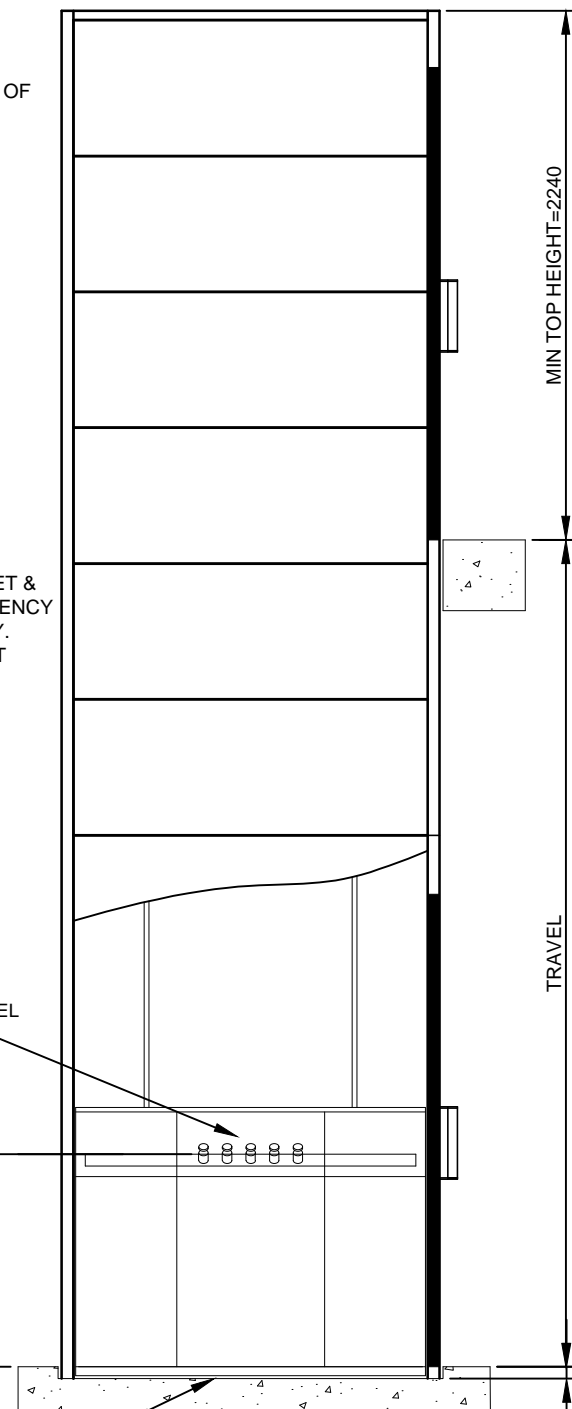
PIT=50
+10
-0

POWDER COATED STEEL /
EPS / STEEL SANDWICH
PANELLING

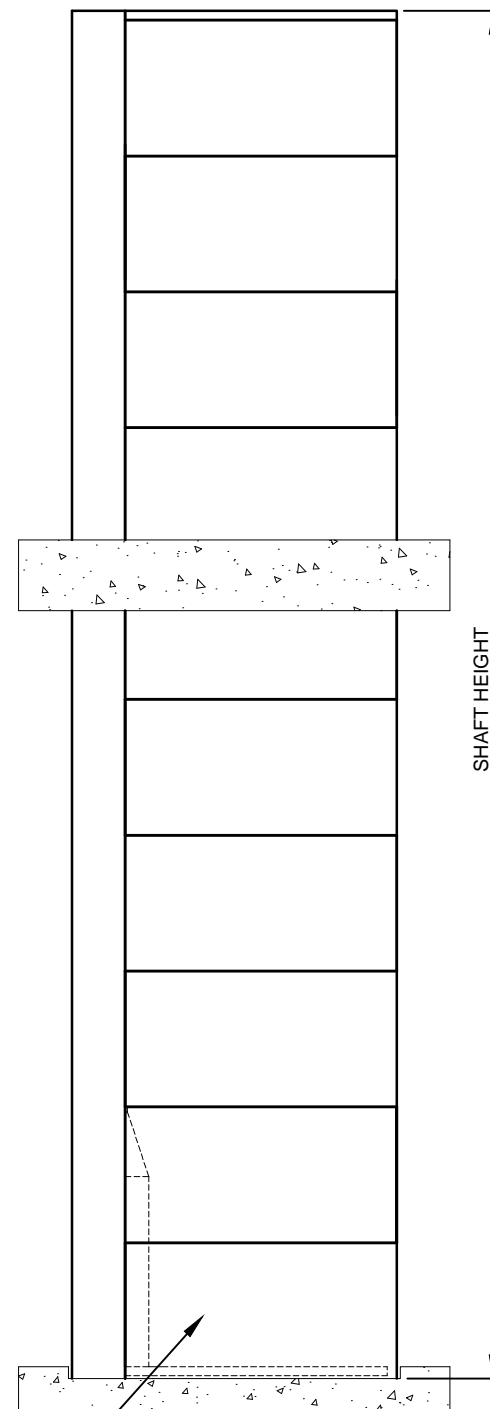


VIEW A

NO INSULATION OR SCREED IN FLOOR
CONSTRUCTION UNDER SHAFT



VIEW B



VIEW C

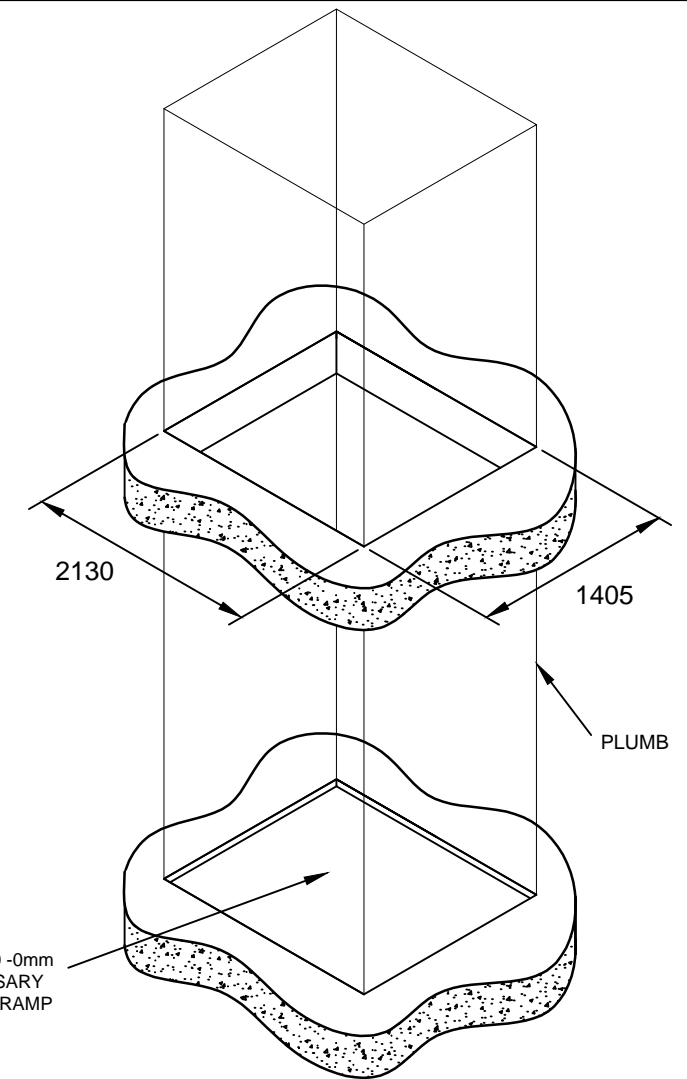
PRINCIPAL DATA:

TYPE:
ARITCO PUBLICLIFT ACCESS / HOMELIFT ACCESS
DRIVE SYSTEM:
STATIC SCREW WITH ROTATING NUT
CAPACITY:
410KG OR 500KG
TRAVEL:
VARIABLE
2 SHOWN (UP TO A MAXIMUM OF 6 AVAILABLE)
SUPPLY VOLTAGE:
230V 1PH 50HZ (3 PHASE AVAILABLE)
RUNNING CURRENT:
4.7AMP
STARTING CURRENT:
18AMP
STANDARD COLOUR:
RAL 9016 WHITE
(OTHER RAL COLOURS AVAILABLE)

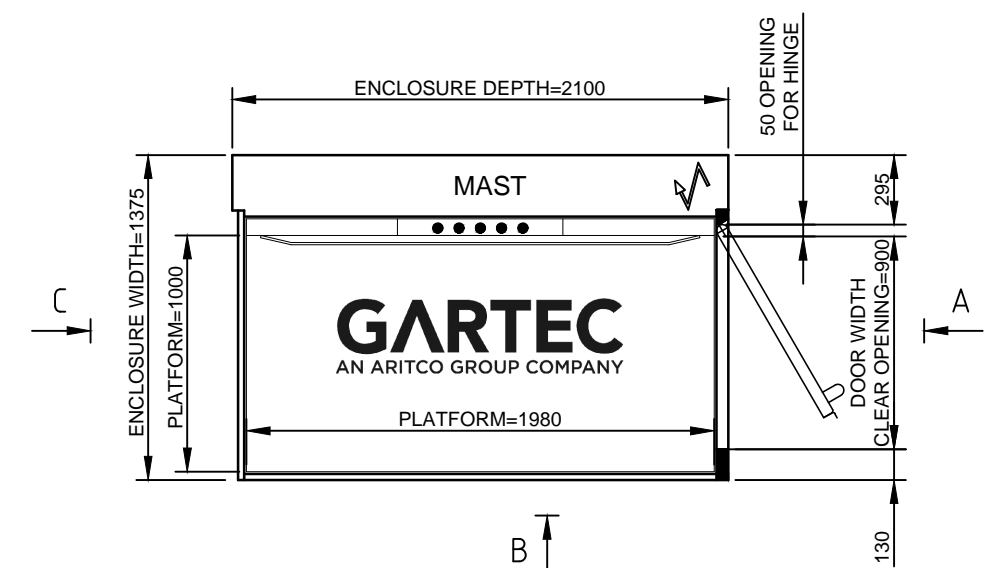
DOOR DATA:

TYPE:
GL TYPE SHOWN (ALTERNATIVES AVAILABLE)
NO OF DOORS:
2 SHOWN (UP TO A MAXIMUM OF 6 AVAILABLE)
FIRE RATING:
AVAILABLE (NOT SHOWN)
OPENING SIZE:
900 X 2000MM
DOOR FRAME:
INTEGRAL TO SHAFT ENCLOSURE
DOOR/FRAME COLOUR:
WHITE POWDER COATED RAL 9016
DOOR GLASS:
VARIABLE
CLOSER:
MANUAL TYPE SHOWN
(AUTOMATIC VERSION AVAILABLE)
FURNITURE:
FITTINGS IN ANODISED ALUMINIUM

NOT TO BE USED FOR CONSTRUCTION - INDICATION
PURPOSES ONLY - REFER TO SITE SPECIFIC DRAWING



APERTURE & PIT REQUIREMENTS



GARTEC PUBLICLIFT ACCESS / HOMELIFT ACCESS: 1000 X 1980, 2 STOP, ENTRY/EXIT SAME SIDE

GARTEC

AN ARITCO GROUP COMPANY

Tel: +44 (0) 1296 397 100 Fax: +44 (0) 1296 397 600
email: sales@gartec.com www:gartec.com

Midshires Business Park
Smeaton Close
Aylesbury
Bucks
HP19 8HL

Drawn by S.H.	Scale NTS	Date 16/02/21
Drawing No. SALES-107		Issue 3