

Door

Door type GD double glass

Door with two glass panels.



Fireproof door E160

Fire and smoke rated door. Complies with the lift directive 95/16/EC and EN 81-58. A widener can also be added to make the full width of the shaft fireproof.



Door type HG, half height door

If you require an open shaft or if the head space is low the use of a half height door may be a suitable solution. Only available for lifts with a travel of up to 3 metres.



Door opener (external)

Mounted on the surface of the door, the operator opens and closes the doors automatically for easier access.



Door opener (internal)

Opens and closes the doors automatically, the mechanism is concealed within the door.



Centre opening swing door

With automatic opening and closing included, this stylish innovation suits home and commercial applications alike. What's more, it also reduces door encroachment on the landing, freeing up valuable space.



RAL-painted door

We offer the option to have the door blade, frame or both painted in the colour of your choice.



Landing faceplates stainless steel

Gives the lift a more stylish impression, especially when combined with the stainless steel door handles.



Door handles stainless steel

Increases the stylish look of the lift.



Key switch on door

Used to restrict access to the lift. Can be used to both call and send the lift. School locking function.



Platform

Platform sizes

6 different options for platform sizes to suit needs or space restrictions: 900x1280, 900x1480, 1000x1280, 1000x1480, 1000x1980 and 1100x1480mm.



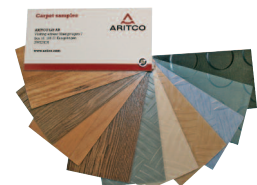
Full height console

If there is a desire to make the lift look more like a conventional lift this is a good choice. Fluorescent light fitting and a mirror is standard and as a further enhancement spotlights are also available. Only available for platform sizes 1000x1480 and 1100x1480mm.



Platform flooring

Vinyl, rubber, aluminium or simply no floor cover at all. Vinyl and rubber are available in several different colours.



Handrail stainless steel

Gives the platform a more stylish impression, especially when combined with the stainless steel platform faceplate.



Platform (continued)

Platform faceplate stainless steel

Increases the stylish look of the platform.



Key switch on platform

Locks the platform functions and prohibits unauthorised use.



Fold down seat

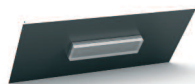
Gives you the opportunity to sit down while using the lift. Solid wood seat and chromed brackets.



Shaft

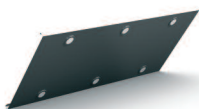
Ceiling with fluorescent light fitting

Fluorescent light fitting. Brightens the shaft. Complies with LUX regulations.



Ceiling with LED spotlights

Inner ceiling fitted with LED spotlights for a luxurious and modern feel. Complies with LUX regulations.



Shaft stainless steel

Our most exclusive option; this provides a stainless steel finish to both the interior and exterior of the lift.

Shaft RAL-painted

The interior and exterior of the lift can be powder coated with a wide variety of colours to better suit any environment.

Glass panels/modules

3 sides of the lift can be fitted with glass panels. Standard height is 736mm, however other glass sizes up to a maximum height of 2500mm are available.



Communications

Telephone

A telephone handset is provided as standard. Can be equipped with a GSM module. GSM module requires a SIM card.



Autodialler – Safeline MX

Activated when the alarm button is pressed. Concealed within the platform panel, the Safeline MX dials automatically and is also vandal resistant. Can be equipped with a GSM module. GSM module requires a SIM card.



Voice synthesiser/landing indicator

Digital display positioned at the platform faceplate. Can also be fitted with a voice announcer that is available in several languages.



External landing indicator

Landing indication with voice annunciation for the exterior. This is positioned adjacent to the door call station and provides lift position information.



Arrival signal

An audible signal when the platform arrives at each landing.

Remote control, radio/infra-red

Provides remote controlled access to the lift. Radio control is the more popular solution while infra-red control is better suited for environments where the use of radio controlled devices is prohibited, e.g. airports and hospitals.



Technical solutions

230 volt 1-phase frequency converter

If the building/site does not support 400 volt three-phase power supply, our single-phase conversion unit can be specified.

Battery operated emergency lowering

Secures safe travel to the nearest landing in case of power failure. Operation is available from both the platform and outside of the lift.

Soft start

Provides a gentle start when a landing button is pressed.

Automatic lubrication system

Oils the drive screw at regular intervals, even when the lift is not in use.

External landing faceplates

Facilitates the option to place the landing faceplates at a distance from the lift.

Electrical cabinet alternate position

If the normal position of the electrical cabinet proves difficult we offer the option to move the electrical cabinet to another landing or to position it remotely in a lockable casing.