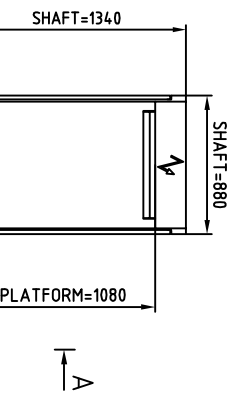
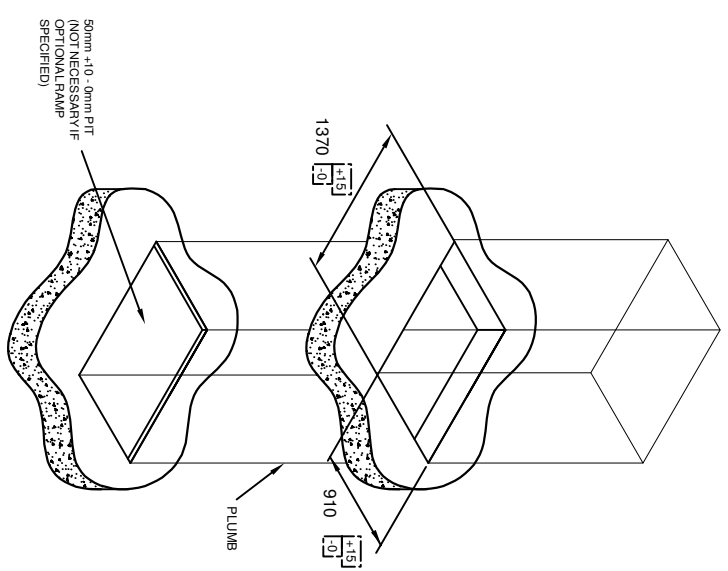
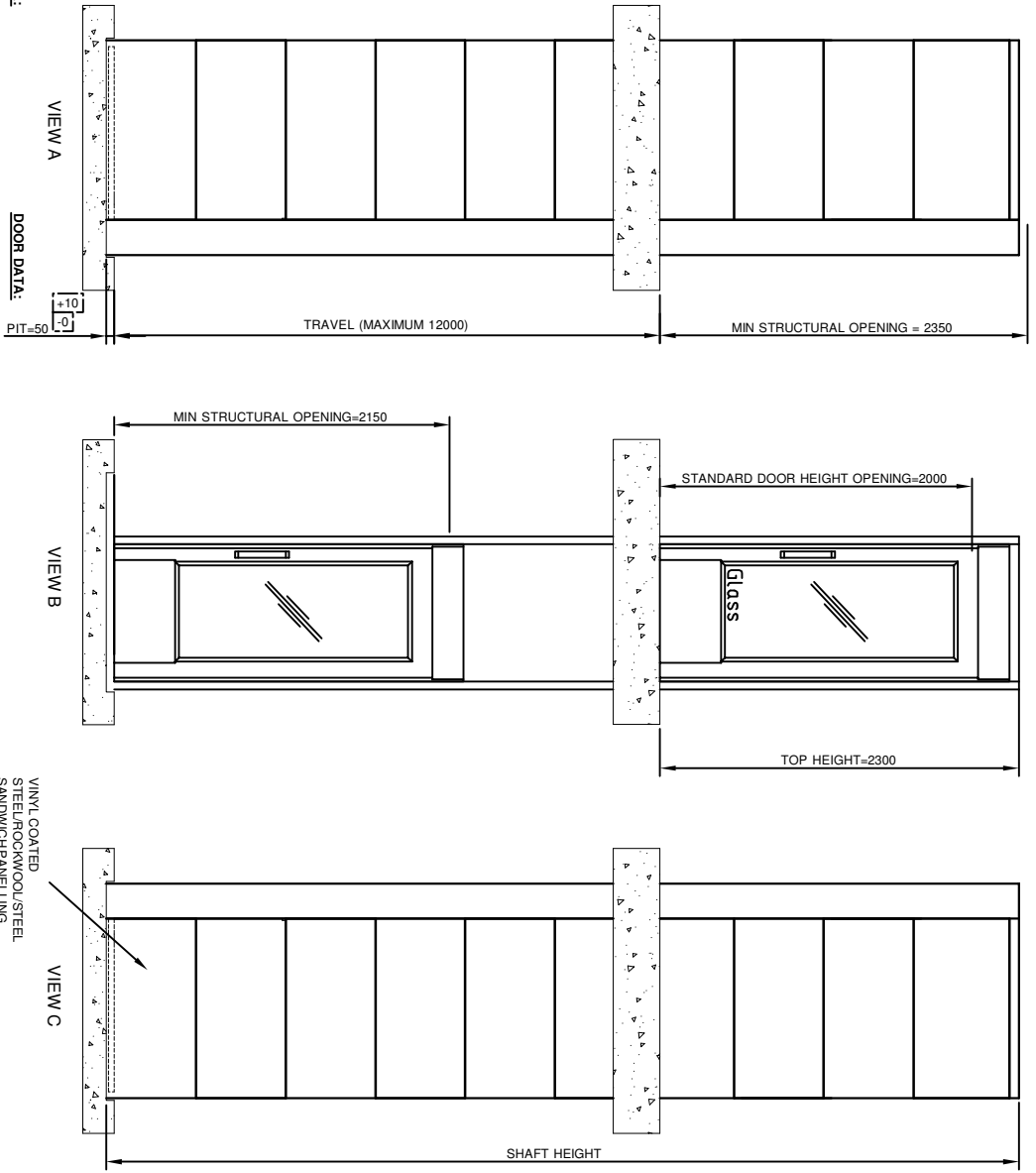


NOT TO BE USED FOR CONSTRUCTION - INDICATION PURPOSES ONLY - REFER TO SITE SPECIFIC DRAWING

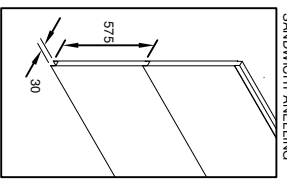


PRINCIPAL DATA:

TYPE: PRIME 4000 PLATFORM LIFT
DRIVE SYSTEM: STATIC SCREW WITH ROTATING NUT
CAPACITY: 225KG
TRAVEL: VARIABLE (UP TO A MAXIMUM OF 12000)
NO OF STOPS: 2 SHOWN (UP TO A MAXIMUM OF 6 AVAILABLE)
SUPPLY VOLTAGE: 240V 1PH 50HZ (SINGLE PHASE AVAILABLE)
RUNNING CURRENT: 4.7AMP
STARTING CURRENT: 10AMP
STANDARD COLOUR: RAL 9003 WHITE
 (OTHER RAL COLOURS AVAILABLE)

DOOR DATA:

TYPE: GLASS
NO OF DOORS: 2 SHOWN (UP TO A MAXIMUM OF 6 AVAILABLE)
FIRE RATING: NOT AVAILABLE
OPENING SIZE: 800 X 2000MM
DOOR FRAME: INTEGRAL TO SHAFT ENCLOSURE
DOOR FRAME COLOUR: VINYL COATED STEEL ROOM/STEEL SANDWICH PANNELLING
DOOR GLASS: VINYL COATED STEEL ROOM/STEEL SANDWICH PANNELLING
ALTERNATIVE OPTIONAL RAL COLOUR (SPECIFIED)



PRIME 4000: 2 STOP LIFT, SAME SIDE ENTRY/EXIT		GARTEC <small>An Artec Group Company</small>	
Midshires Business Park Smeaton Close Aylesbury Bucks HP19 8HL		Drawn by R.C.	Scale NTS
		Drawing No. SALES-500	Date 09/05/11
			Issue 3
Tel: +44 (0) 1296 397 100 Fax: +44 (0) 1296 397 600 email: sales@gartec.com www.gartec.com			